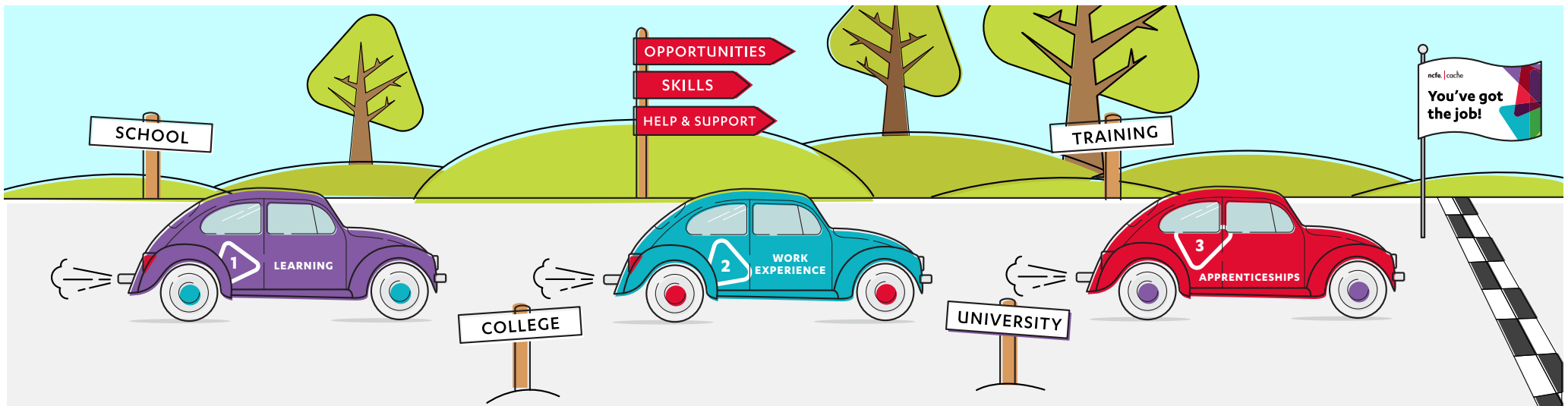


# Blended learning programmes

A package of employability resources to complement your Study Programmes.



**We know that developing and delivering your 16-19 vocational curriculum can be a challenge and technical education is an area of constant change.**

**That's why at NCFE, we are offering resources for your programmes that support progression to Higher Education and employment which provide a seamless fit into your wider curriculum.**

**These resources and programmes have been developed in conjunction with employment specialists Reed to support employability within the curriculum.**

**This includes a full package of resources to support your learners' progression whilst helping your centre to meet Ofsted expectations.**

### **Blended programmes of learning**

NCFE's blended learning employability programmes focus on progressing learners towards their chosen routes by building their confidence and boosting their skills.

They are specifically designed to:

- support 16-19 vocational curriculum development
- support Ofsted expectations
- enhance learner programmes and offer additionality into programmes
- equip learners with the mindset and employability skills to meet their goals.

### **Accessed via the Moodle platform, blended learning offers:**

- a bespoke tutor interface to track learners' progress and access resources
- full packages of resources including scheme of work, lesson plans and activities
- online interactive resources including videos, games and PDF workbooks
- extension resources and differentiation assessment challenges
- modules to support British values and Prevent strategies.

### **The programmes are:**

- 1. Study Programme enrichment**  
During this programme, learners will understand themselves, the working world around them and develop the skills needed to progress into their chosen route.
- 2. Progression to work experience Year 1 and 2**  
During this programme, learners are able to build skills and confidence to secure, and succeed in, their own work experience placement.
- 3. Progression to apprenticeships**  
During this programme, learners will be able to apply their knowledge and skills to increase their chances of obtaining a valuable apprenticeship programme.

### **Why use these resources?**

- They support the requirements for the Study Programme and enable you to establish quantitative evidence of your learners' starting points in terms of job readiness.
- The learning programmes are blended and contain a unique tool to facilitate tutor delivery, with session plans, tutor guides and a digital virtual learning interface.
- All resources include distance learning, interactive games, learner led activities and independent tasks; these are all designed to cover essential learning on personal, social and employability skills. They also contain the unique feature of workplace behaviours and the impact of British Values on modern day work practice.
- BESTest and the blended learning programmes support meeting Ofsted CIF grade 'Personal Development, Behaviour and Wellbeing' where inspectors will consider how a provider prepares learners for the world of work. You will be able to evidence that learners are developing their employability skills and supporting progression into work experience, future learning options, and eventually, employment.

## Prices

Standard Learning Programmes - Moodle						
		Standard Learning Programmes				
		30-99	100-299	300-799	800-1999	2000+
All prices are exclusive of VAT and are subject to a 12 month licence. Customers who purchase all 4 blended learning programmes will receive a discount of between 10-20%.	Study Programme Enrichment	£2.70	£2.60	£2.50	£2.40	£2.30
	Progression to work experience Yr1	£2.00	£1.90	£1.80	£1.70	£1.60
	Progression to work experience Yr2	£2.00	£1.90	£1.80	£1.70	£1.60
	Progression to apprenticeship	£2.30	£2.20	£2.10	£2.00	£1.90
	Cost per learner for all bundles	£9.00	£8.60	£8.20	£7.80	£7.40
	Discount	30%	30%	30%	30%	30%
	<b>Total with discount</b>	<b>£6.30</b>	<b>£6.02</b>	<b>£5.74</b>	<b>£5.46</b>	<b>£5.18</b>